

Step-by-Step Procedures of P-alert Setup

Functions of all input points and other settings, please refer to the manual attached.

Following step-by-step procedures are for users to activate P-alert and link it to computers.

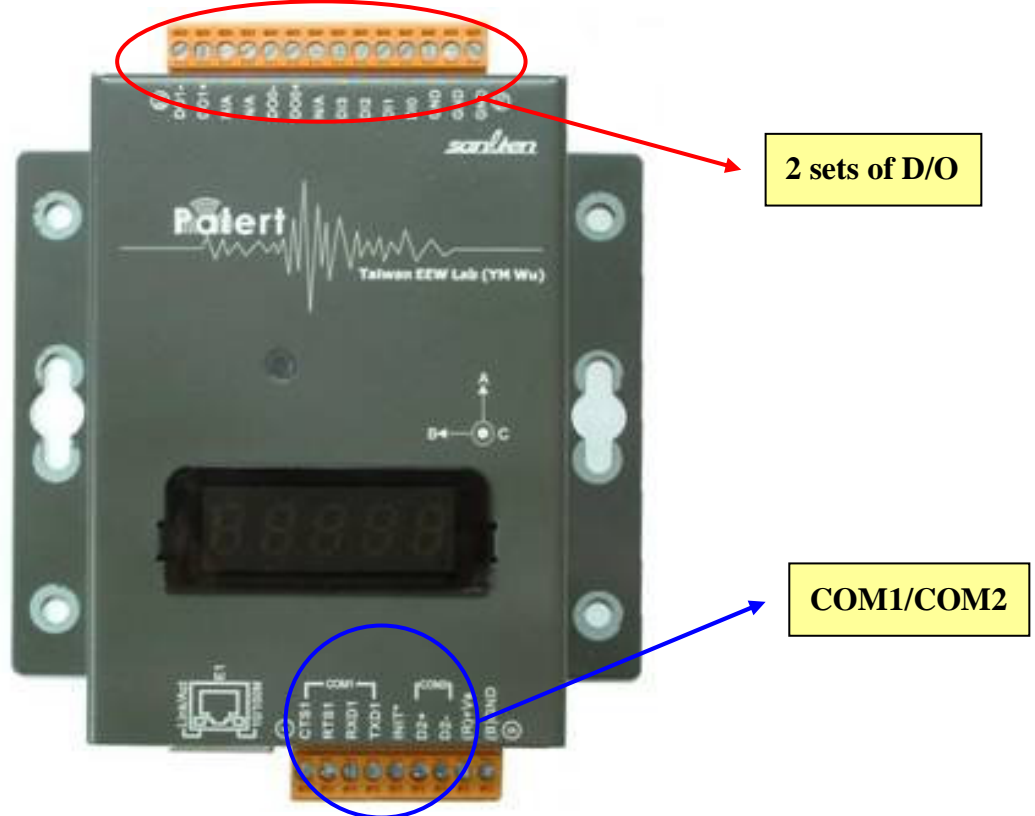
1. Activate P-alert with 10~30VDC, 300mA power



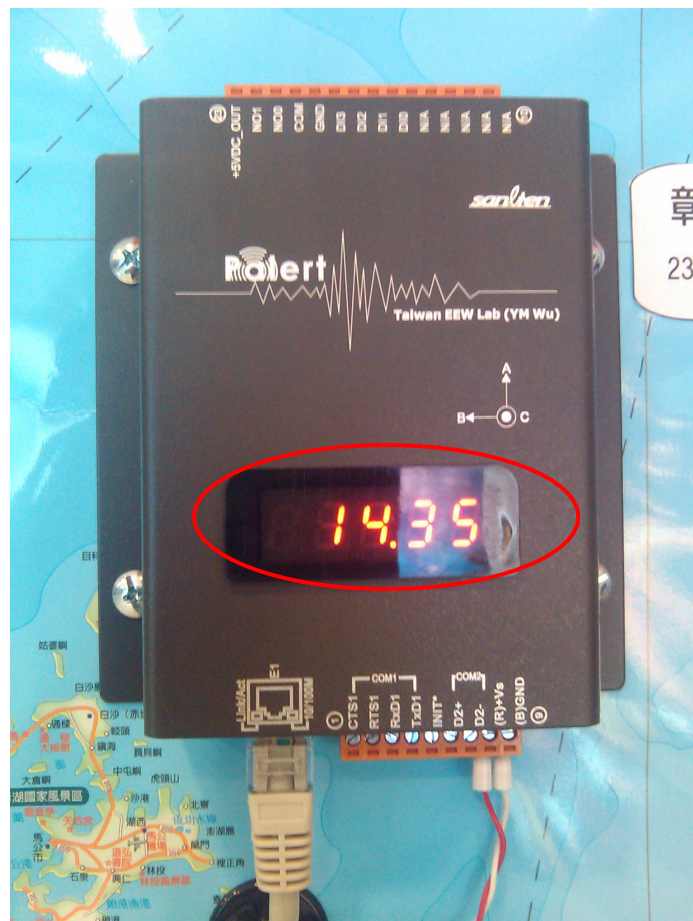
2. Link P-alert to your computer with TCP/IP network connection.



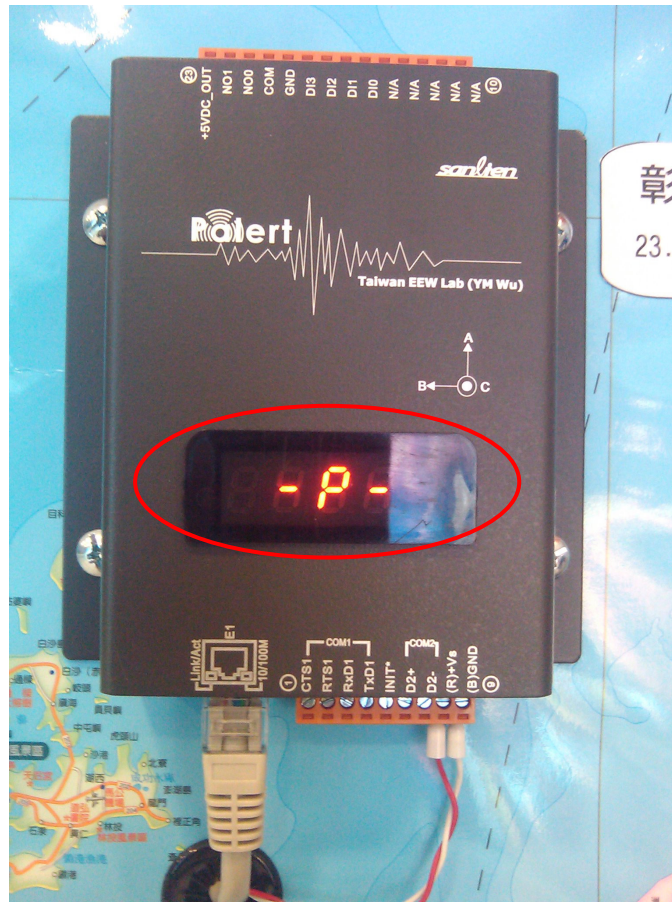
3. 2 sets of D/O and COMS are able to be connected to other devices, such as gas valves, elevator controllers, or through HMI or PLC to control other equipment.



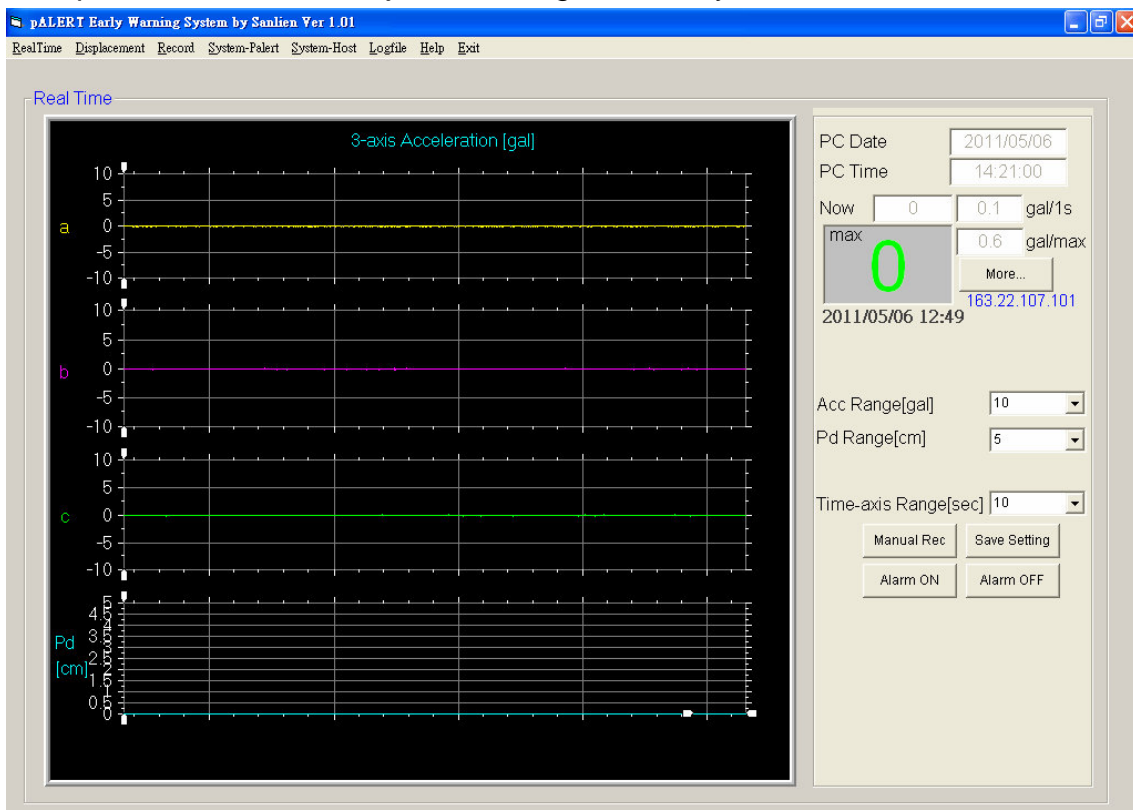
4. If the network connects to the Internet successfully, the RTC (real time clock) will stop glittering and stay stable. This indicates P-alert has already linked to NTP server (IP:59.124.196.84) and will be collaborated automatically every 600 seconds.



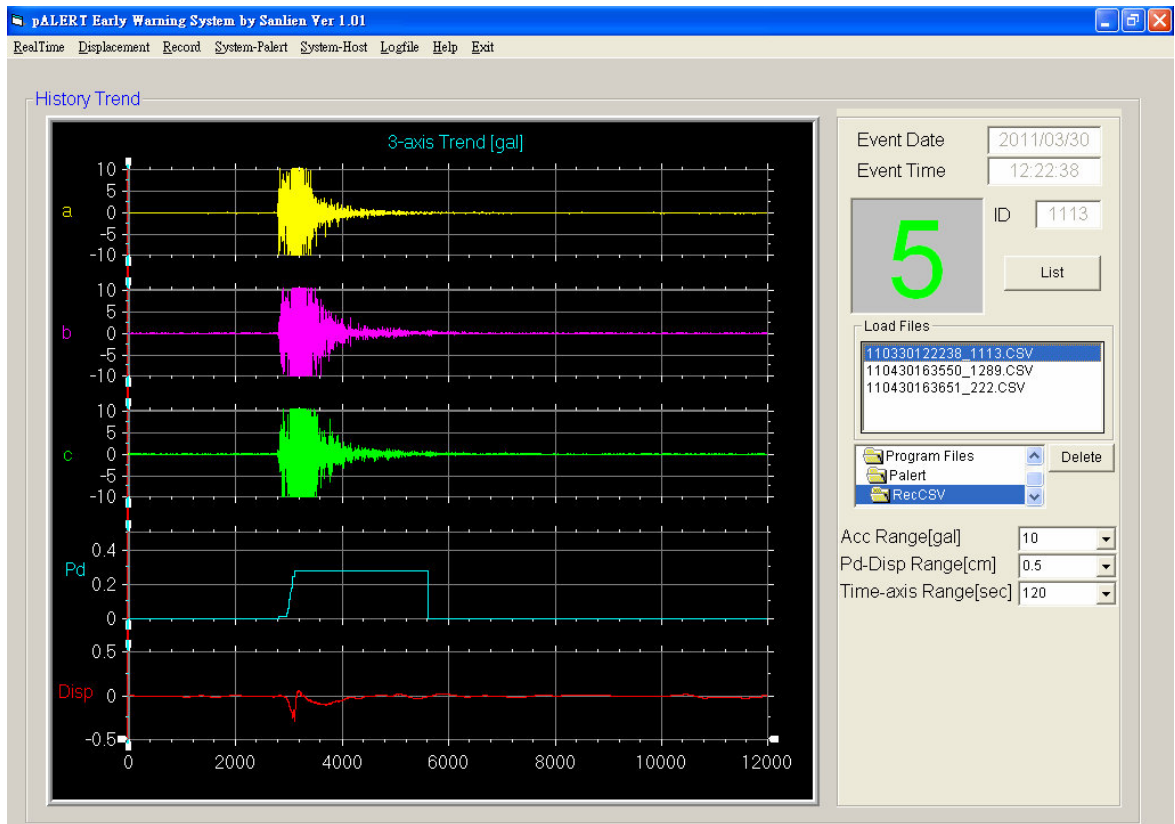
- When triggered by P wave, the screen shows "P" and P-alert will give estimated maximum intensity 3 seconds after P wave is detected. And because the A axle is designed to detect P wave, P-alert needs to be fixed on a concrete object vertically. Concrete walls or girders on the first floor are good locations. Basements is another perfect spot for P-alert.



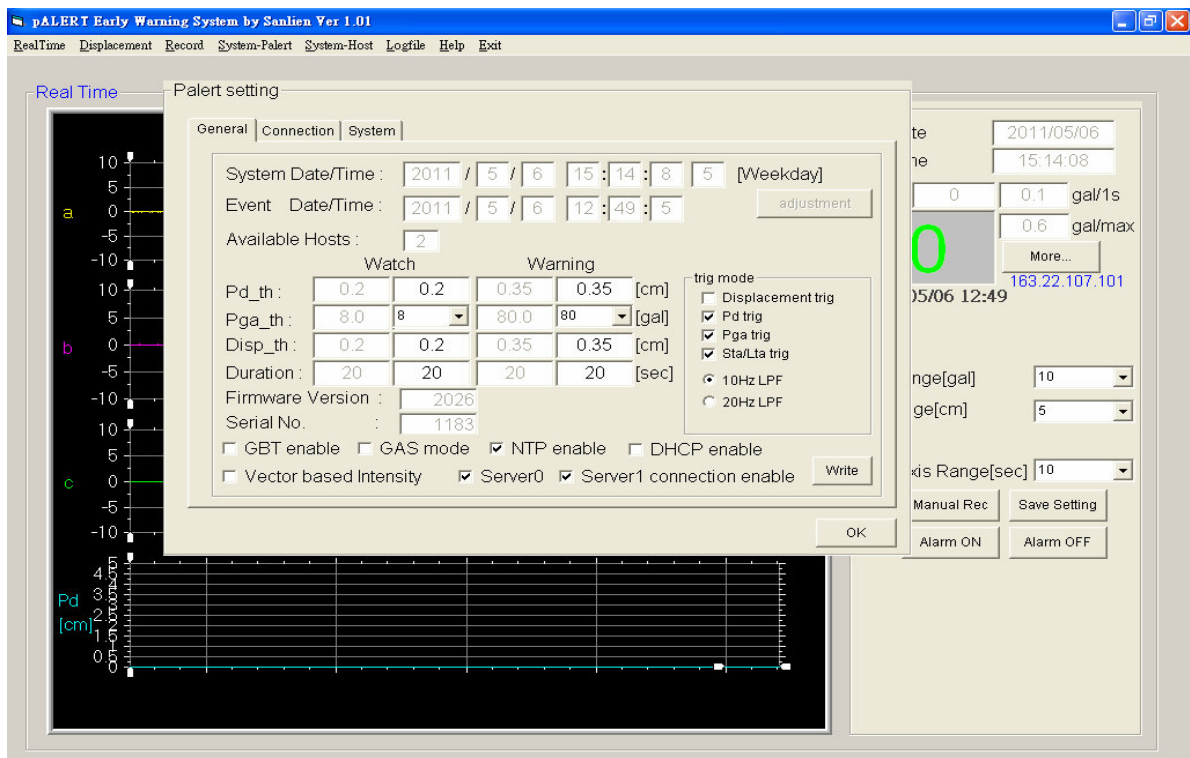
- All the parameters can be adjusted through PC Utility software.



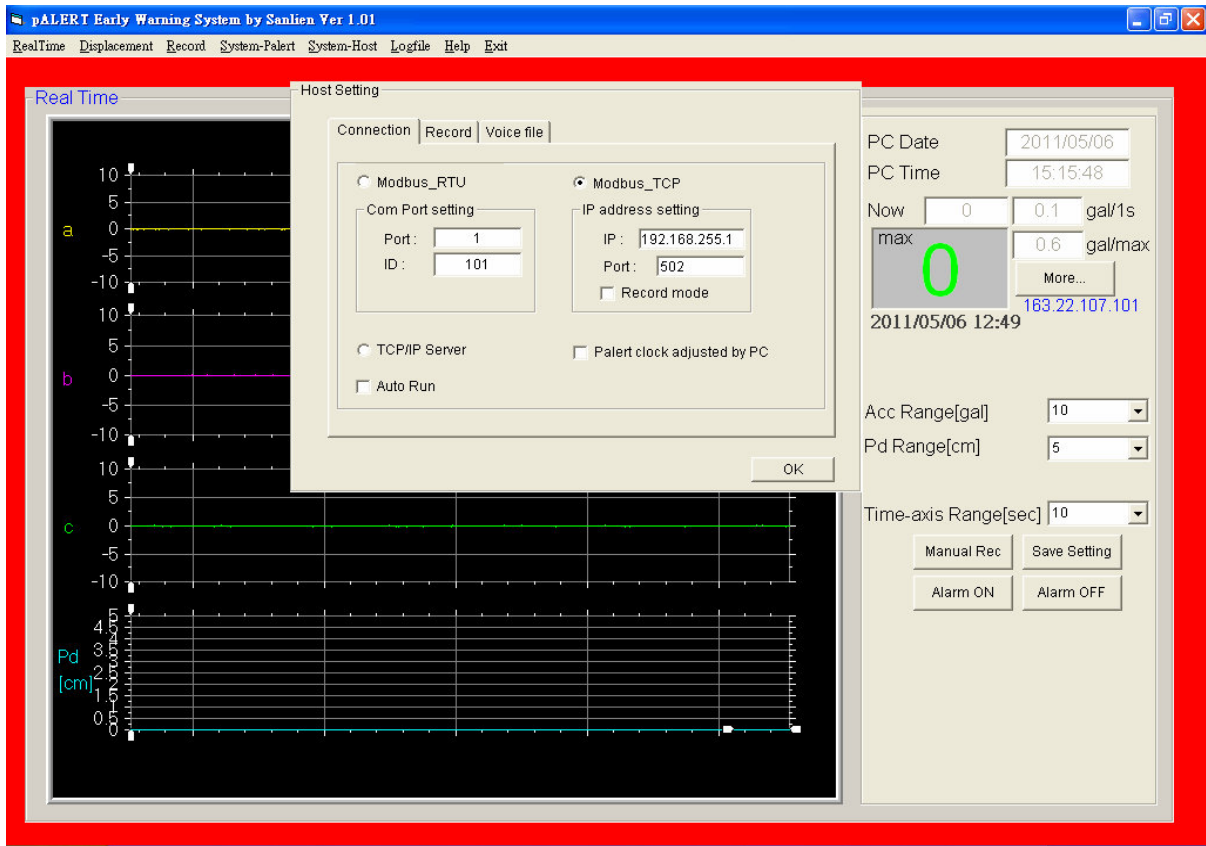
- Real Time: Shows current time. Retrieved from NTP server.
- Displacement: Shows waveforms of displacement.
- Record: Under "record mode", P-alert will record every earthquake event for 120 seconds. Waveforms, event date and time, P-alert ID, and maximum intensity can be seen here.



- System-Palert: All the parameters are adjusted here. Including trigger modes, watch and warning parameters, and other settings.



- e. System-host: Set P-alert I.P. address in order to connect it with any computers through the Internet. One can control it anywhere and anytime as long as he/she has its I.P. address. Check “Record Mode” for event recording for 120 seconds as long as P-alert is triggered. The red column indicates P-alert has not connected to computers.



- f. Log file: Users are able to see P-alert’s activities, such as application start, online/offline, manual exit application, trig mode, maximum intensity, P wave when detecting it, and so on...

